

MANUAL TRIBE

FIRE

EGYPT

RETURNING HOME

FROM 28 APRIL TO 5 MAY 2026

ANA OLIVEIRA

THE TRIBES ON THIS JOURNEY

It is with the Fire Tribe that we activate the impulse, the will, and the power to begin. If within the soul map there are codes that sustain us, it is here that we find the “flame” that sets them into motion.

Fire reveals how matter can be activated by spirit, and how spirit requires courage to manifest in matter.

Within the 4 x 3 code we find foundation and ascension (earth and fire).

It is Fire’s role to ignite the flame that connects these two dimensions.

This is perhaps the most desired tribe and, at the same time, the one that awakens the greatest reverence within us. Because to speak of Fire is to speak of power. And to speak of power is to assume responsibility. From soul memories, many of us carry imprints of abuse of power, persecution, judgment, or even death for expressing our truth and essence.

For this reason, activating the Fire can bring enthusiasm... but also fear:

Fear of shining.

Fear of stepping forward.

Fear of occupying our rightful place.

And yet, it is through this flame that we remember that true power does not dominate — it illuminates; it does not impose — it inspires; it does not destroy — it transforms.

Exploring the Fire Tribe is revisiting our inner map and asking:

Am I using my power consciously?

Am I hiding it out of fear of repeating old stories?

Or am I giving it away to others because I do not trust the power I hold?

In this way, I feel that the Fire Tribe comes to support us on this journey, inviting us to become aware of whom, or what, we give our power to — and to consciously choose where we place our passion and our most divine potential.



FIRE TRIBE

Even under adverse conditions, our body produces heat.

The beating of our heart sustains a constant temperature (around 36.5°C to 37°C / 97.7°F to 98.6°F), allowing life to flourish within us.

We are, therefore, warm-blooded beings.

And this fire that pulses within us as if by magic... comes from the Soul.

CONNECT

GALACTIC CODE - FIRE TRIBE



HOW TO USE IT?

Observe the code for a few minutes.

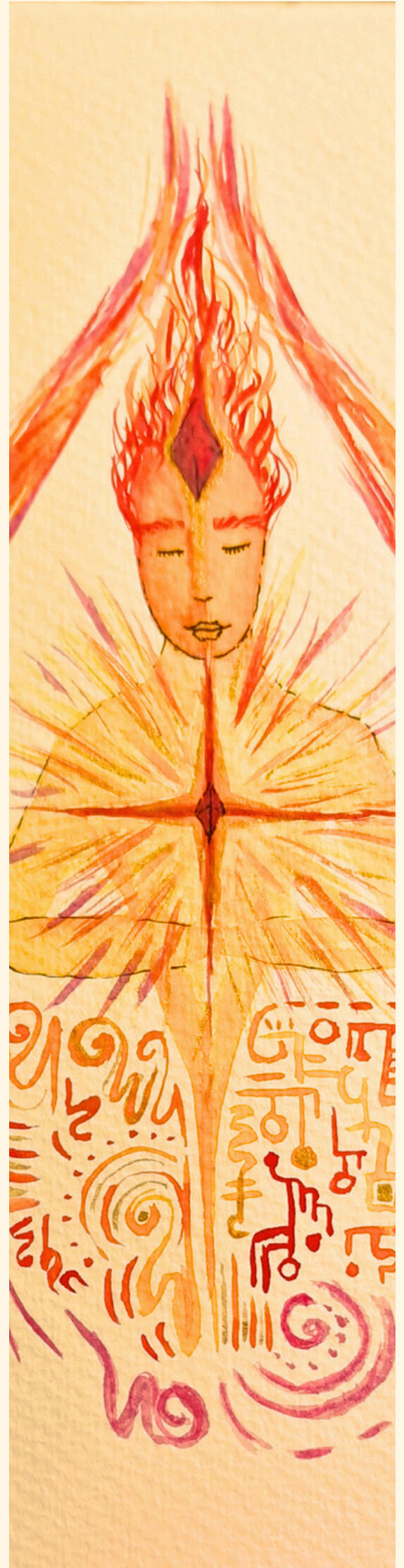
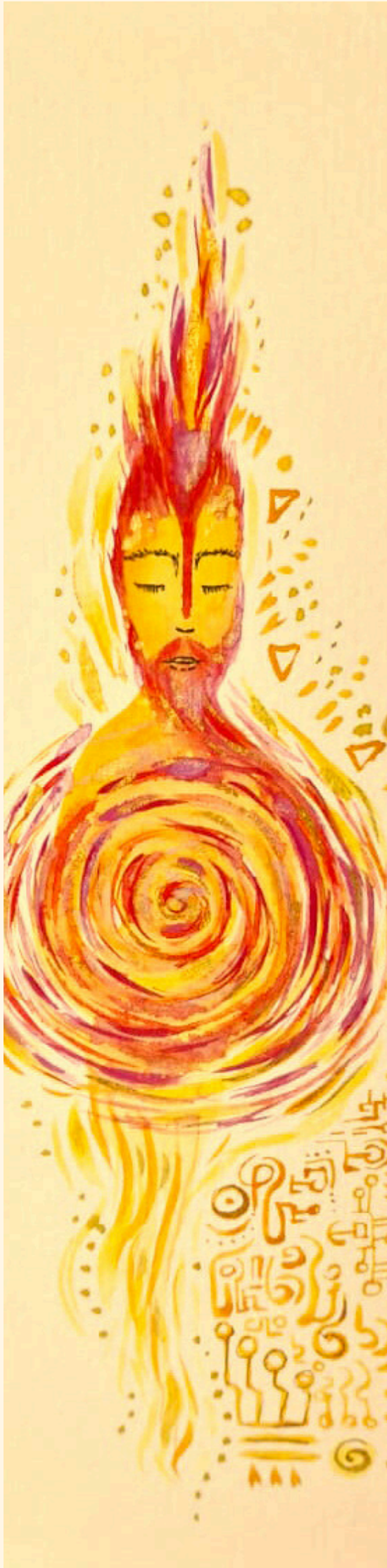
Close your eyes and affirm inwardly:

“I welcome the sacred fire of my Soul to illuminate my path.

I recognize the channel that I am.”

THE THREE FAMILIES

GUARDIANS OF THE FIRE TRIBE



GUARDIANS OF THE DAWN
GUARDIANS OF ESSENCE
GUARDIANS OF THE PATH

GUARDIANS OF THE DAWN

FIRE TRIBE FAMILY

This Guardian Family reminds us of the importance of renewal. It becomes essential to recognize where we are placing our will and personal power, and to adjust our focus whenever necessary.

And, being a Fire Tribe, the questions arise:

- Where am I using my energy?
- Am I repeating cycles from the past?
- What new beginnings require courage?
- What within me longs to be born?



When memories of failure, fear of making mistakes, or fear of owning one's own light emerge, the role of these Guardians is to reignite the fire of the solar plexus, reminding us that every sunrise brings a new opportunity. We learn to use our will consciously, transforming each choice into an initiatory act, remembering that we are the creators of every experience.

AM I USING MY POWER TO CREATE A NEW PATH? OR DO I REMAIN IN THE PAST, AFRAID TO CHOOSE SOMETHING NEW?

GUARDIANS OF ESSENCE

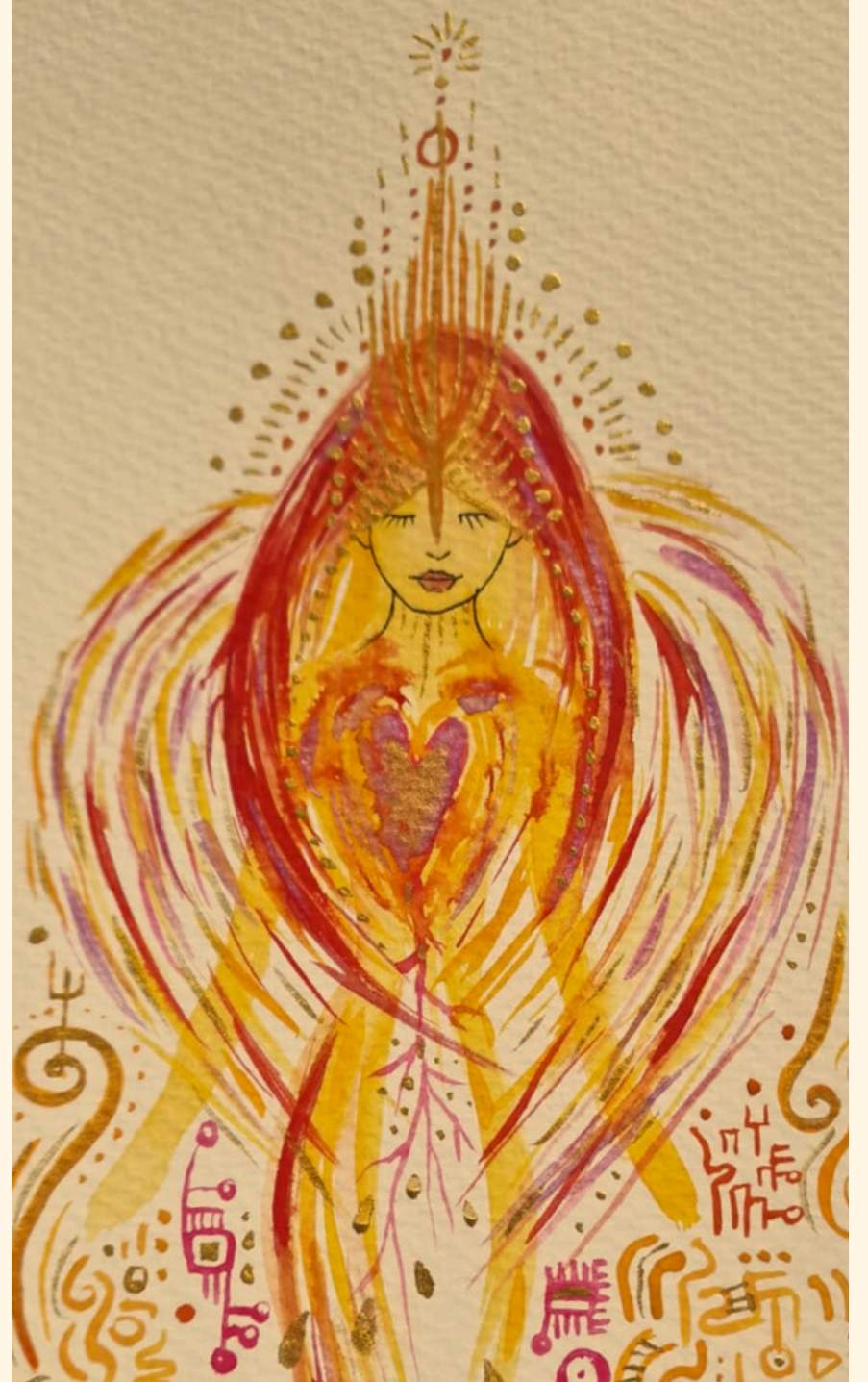
FIRE TRIBE FAMILY

This Guardian Family reminds us of the importance of returning to the heart.

It becomes essential to listen to the inner pulse and recognize what is true within us.

And, being a Fire Tribe, the questions arise:

- Am I aligned with my essence?
- Do I allow myself to express who I am?
- Which parts of me have remained hidden out of fear of judgment?
- Does my body feel like an instrument of my Soul?



When memories of rejection, persecution, or pain for expressing one's truth emerge, the role of these Guardians is to guide us back to the temple of the heart, where the essential flame remains untouched.

We learn that true power is born from authenticity, and that essence requires no effort – only permission.

**DO I ALLOW THE PULSE OF MY HEART TO GUIDE ME?
OR DO I CONTINUE SILENCING MY TRUTH IN ORDER
TO BE ACCEPTED?**

GUARDIANS OF THE PATH

FIRE TRIBE FAMILY

This Guardian Family reminds us of the importance of caring for our own journey.

Recognizing that the Soul's path is not linear, but deeply initiatory, helps us accept the roads we choose.

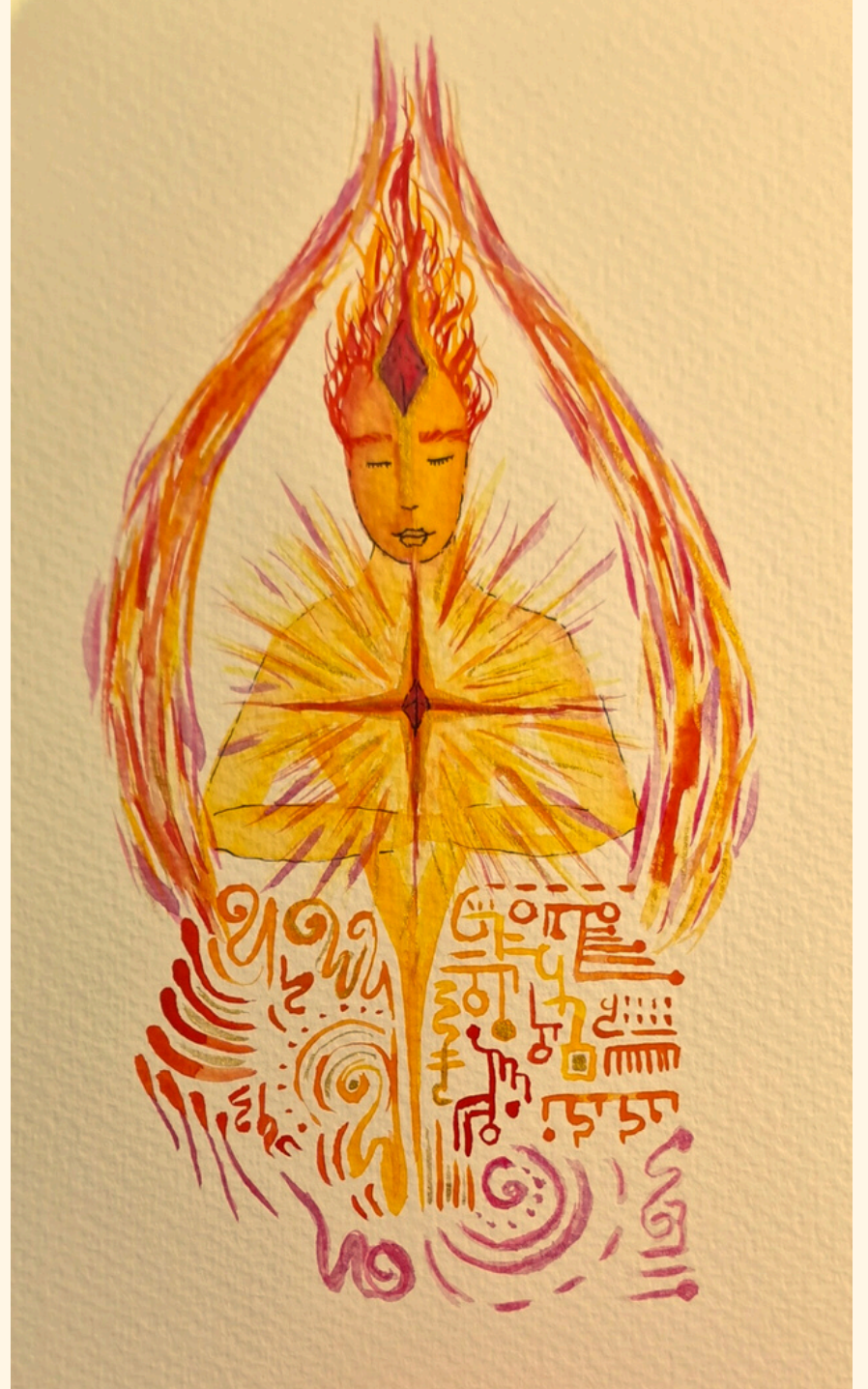
And, being a Fire Tribe, the questions arise:

- In which direction am I truly walking?
- Am I following my guiding star or external expectations?
- Am I afraid to change course?
- Do I trust the inner wisdom that guides me?

When moments of doubt, deviation, or feeling lost arise, the role of these Guardians is to remind us that the map lives within us, and that we can recalibrate our route whenever necessary.

We learn that every step – even the most uncertain – is part of the crossing that leads us back to who we truly are.

DO I TRUST THE INNER WISDOM THAT GUIDES ME THROUGH NEW AND UNKNOWN PATHS? OR DO I PREFER THE SAFETY OF WHAT I ALREADY KNOW, EVEN IF IT DOES NOT HELP ME GROW?



more info

FIRE TRIBE AND ITS GUARDIAN FAMILIES

On YouTube, you'll find videos with insights about these Guardians and guided meditations to connect with them in a deeper way.

[FIRE TRIBE](#)

[GUARDIANS
OF THE DAWN](#)

[GUARDIANS
OF ESSENCE](#)

[GUARDIANS
OF THE PATH](#)

***EXTRA SUGGESTION:**

FOR ONE WEEK, PRACTICE SILENT MEDITATION WHILE OBSERVING A CANDLE.

MAKE THE ENVIRONMENT AS DARK AS POSSIBLE AND CONNECT ONLY WITH THE FLAME.

YOU MAY PRACTICE IN CYCLES OF 5 TO 15 MINUTES.

INVOKe THE WISDOM OF THESE GUARDIANS AND ALLOW YOURSELF TO BE GUIDED.

